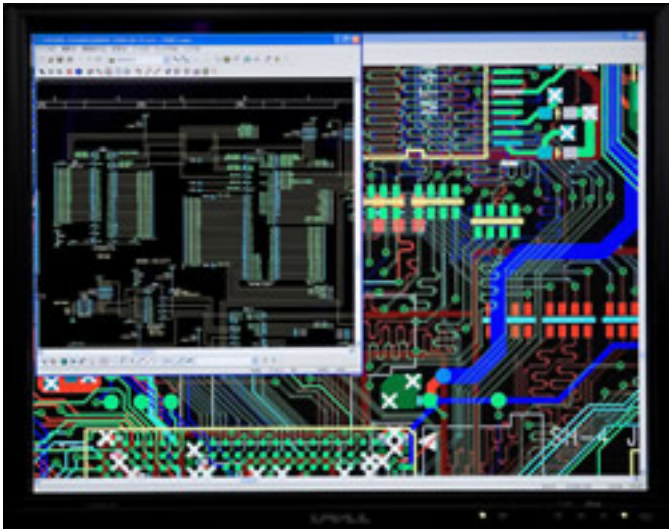


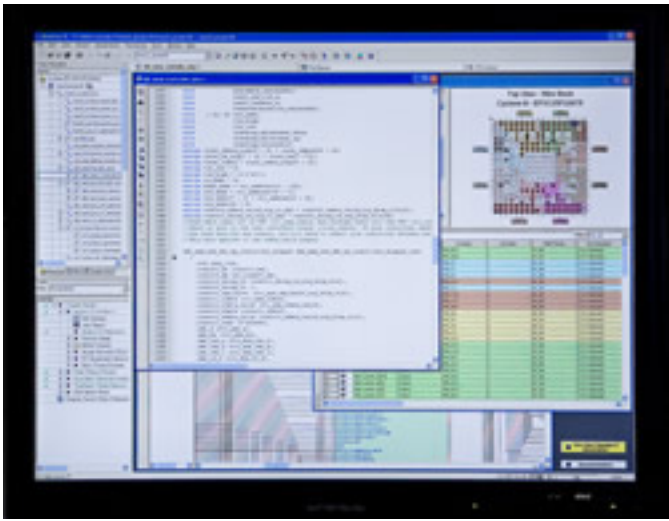
:: ◎ Printed Circuit Board Design and Simulation

- Our circuit designers also perform Printed Circuit Board design, enabling us to perform efficient development that takes signal flow into consideration.
- Our circuit designers work together with our mounting division to produce improved productivity.
- Our Printed Circuit Board design feature a high level of electrical safety, and higher production efficiency, for reduced costs.
- Our Printed Circuit Board design is coordinated with our circuit design, enabling us to perform not only simple pin switching such as FPGA, but also more involved and efficient wiring work.
- We develop highly noise-resistant Printed Circuit Board, and reduce the number of Printed Circuit Board layers.
- In our transmission path simulations, we select the smallest required signals, proposing cost reduction approaches.



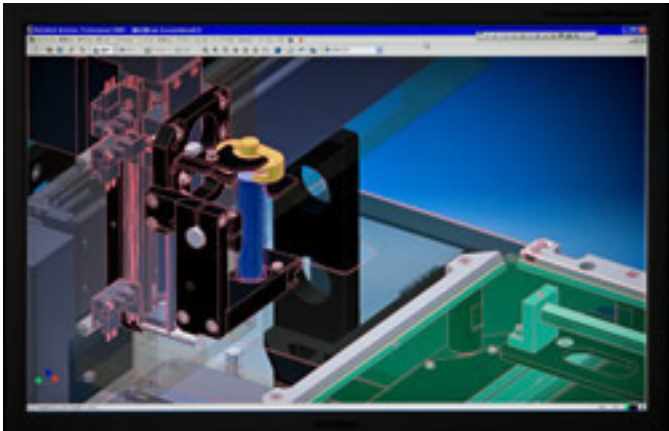
:: ◎ Hardware and Software Development

- CPU-based digital processing circuits
- CPU-focused assembly software design (primarily in C)
- Multi-CPU and multi-task support
- General drive related development (DC/AC motors, stepping motors, solenoids, etc.)
- Device control system design
- Development of highly efficient control software by our programmers, who are well-versed in circuit technology
- Remote control via serial transmission (PC control terminals which use VB)



:: ◎ Mechanical Design and Electrical Design

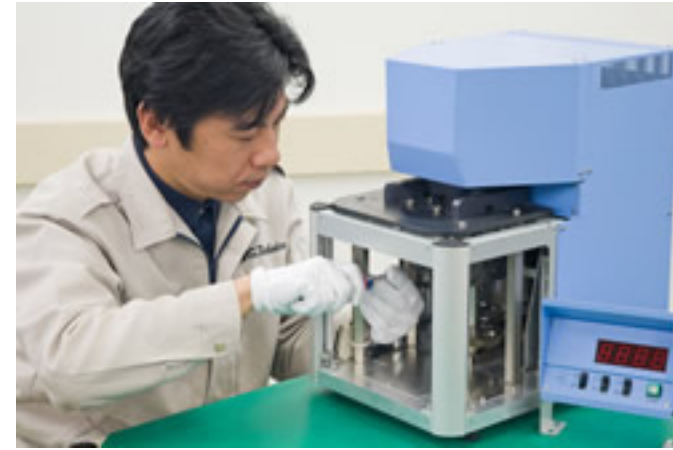
- General control chassis design
We create designs which take into account board thickness, structure, heat dispersion processing, painting, etc. of individual components, as well as working from silk printings, engravings, etc.
- Special control chassis design
We select materials and components and perform design of chasses, including special racks, etc., such as compact PCI, conformant with their respective individual standards.
- Transport related design (drive: electrical)
Motor drive-based conveyor belt design.
Design of stepping motor drive-based single-axis tables using ball screws, LM guides, etc.
We also handle multi-stage design by combining transport systems.
- Air control device-based mechanical design (drive: factory supplied clean air) Chucking / clamp mechanism design device / electromagnetic valve selection and placement.
We also offer package design of devices which combine the above. Our designs factor in control when deciding on sensor placement, as well as taking utility safety measures into consideration.



Autodesk Inventor R11 / Professional 2008

:: ◎ Mechanical Assembly, Unit Assembly and Wire Harness

- We perform a full range of production of power cables, multi-core cables, flat cables, and the like.
- We can also perform various types of bonding and crimping.
- Our wire routing takes electrical characteristics into consideration.
- Our greatest field of experience is assembly and wiring. We have lathes, milling machines, band saws, and other tools for use with prototypes, enabling us to expedite prototype orders.



:: ◎ Printed Circuit Board Mounting

- Leave your mounting needs to us, even for orders as small as a single board.
- We perform Printed Circuit Board inspections using a HIOKI X-Y in-circuit high tester.
 - * Our board testers can measure / detect soldering faults, component faults, resistance values, diode characteristics, unmounted components, and condenser capacity.
- Our external inspection equipment can detect unmounted components, component misalignment, component errors, and printing errors.
 - * Inspection devices are combined to minimize the amount of visual inspection, increasing inspection accuracy.
- Full support for software writing and Printed Circuit Board adjustment.
- Leave your component purchasing to us (300 suppliers).
- We offer timely component and material delivery information.
- Lead-free since 2004.
- Leave your additional jumper wire, pattern cutting, BGA reworking, and additional processing work to us.



:: ◎ Component Procurement

- We can rapidly and accurately procure a wide range of components and materials.
- We offer timely component and material delivery information.
- Our 300 suppliers make it possible for us to procure components which fit customers' needs.
- We immediately notify customers of components which have been discontinued.



| Page Top |